

m o o o i<sup>®</sup>



## Bart Pouf

---

by Moooi Works | Bart Schilder

Inspired by 18th century Rococo, Bart Family is now ready for the full range of 21st century comfort. Together with the Bart Footstool, the Bart Pouf completes the collection with its rounded charm.

---

**Designer**  
**Year of design**

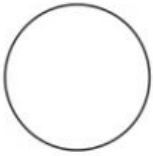
Moooi Works  
2018

# m o o o i<sup>®</sup>

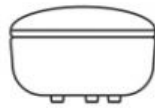
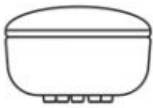
---

## dimensions

65cm | 25.6"



42cm | 16.5"



65cm | 25.6"

---

## cleaning instructions

Moooi recommends using a good furniture polish and a soft cloth. Apply generously in layers to the surface and use the cloth to shine. Do not use abrasive fabrics, gently remove tough stains with warm water and a trusted multi-surface cleaner.

---

## Abbracci

### composition

100% pl

### abrasion

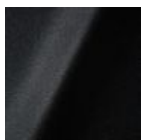
50.000 martindale

### lightfastness 4

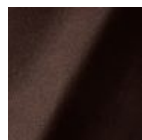
### firetest

FR BS5852 0/1

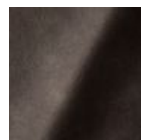
EN1021 I&2



Abbracci  
**Black**



Abbracci  
**Brown**



Abbracci  
**Grey**



Abbracci  
**Oyster**



Abbracci  
**Taupe**

---

## Justo

### composition

15% CO, 35% PC, 10% PL, 40% VI

### abrasion

50.000 Martindale rubs, EN ISO 12947

### lightfastness

Note 5, EN ISO 105-B02

### fire test

EN 1021-1/2

US. Cal. Bull. 117-2013

NFPA 260

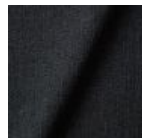
Upon request, with treatment:

BS5852 part 1

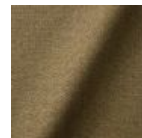
BS5852 crib 5



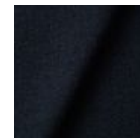
Justo  
**Alge**



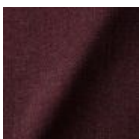
Justo  
**Bazalt**



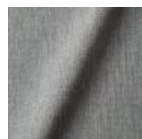
Justo  
**Bred**



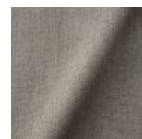
Justo  
**Flod**



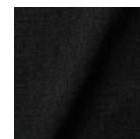
Justo  
**Hinde**



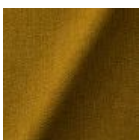
Justo  
**Lyse**



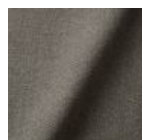
Justo  
**Muse**



Justo  
**Nat**



Justo  
**Sennep**



Justo  
**Sten**

---

## Liscio

# m o o o i<sup>®</sup>

## composition

35% WO / 35% CV / 21% CO / 9% PA

## abrasion

30.000 Martindale

## lightfastness

4-6

## firetest

US. Cal. Bull. 117-2013

Upon request, with treatment:

BS5852 part I



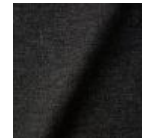
Liscio  
**Grigio Blu  
Scuro**



Liscio  
**Grigio Blu**



Liscio  
**Grigio Scuro**



Liscio  
**Muscio Scuro**



Liscio  
**Muscio**



Liscio  
**Argento**



**Liscio**  
Nebbia



Liscio  
**Pietra**



Liscio  
**Perla**



Liscio  
**Latte Scuro**



Liscio  
**Latte**

---

## Solis

## composition

2% PA 3% PC 30% PL 65% WO

## abrasion

40.000 Martindale rubs, EN ISO 12947

## lightfastness

Note 5, EN ISO 105-B02

## firetest

EN 1021-1/2

US. Cal. Bull. 117-2013

Upon request, with treatment:

BS5852 part I

BS5852 crib5

# m o o o i<sup>®</sup>



Solis  
**Crust**



Solis  
**Dawn**



Solis  
**Fog**



Solis  
**Gray**



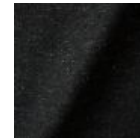
Solis  
**Paper**



Solis  
**Rain**



Solis  
**Spencer**



Solis  
**Suit**



Solis  
**Sunset**

---

## Summit Melange

### composition

20% WO / 5% PA / 15% PES

60% PES filling

### abrasion

50.000 martindale

### lightfastness 6

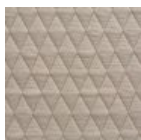
### firetest

EN1021-1/2

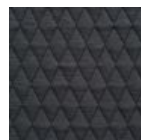
US. Cal. Bull. 117-2013

BS5852 part I

DIN 4102-B2



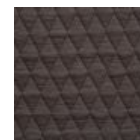
Summit Melange  
**Flour**



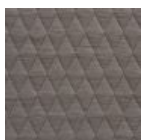
Summit Melange  
**Slate**



Summit Melange  
**Dust**



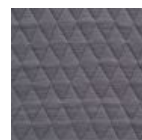
Summit Melange  
**Peat**



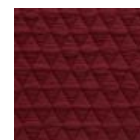
Summit Melange  
**Twig**



Summit Melange  
**Lagoon**



Summit Melange  
**Lavender**



Summit Melange  
**Chili**

---

## Summit UNI

# m o o o i<sup>®</sup>

## composition

22% wo, 2% pa, 14% pl, 62% pl filling

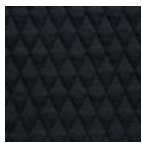
## abrasion

50.000 martindale

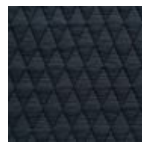
## lightfastness 5

## firetest

EN1021 I&2



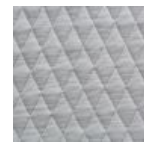
Summit UNI  
**Caviar**



Summit UNI  
**Graphite**



Summit UNI  
**Grass**



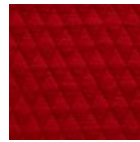
Summit UNI  
**Grey**



Summit UNI  
**Linen**



Summit UNI  
**Natural**



Summit UNI  
**Passion**



Summit UNI  
**Walnut**

---

## Trickle

## composition

60% WO / 20% PES / 20% PA

## abrasion

80.000 martindale

## lightfastness 6

## firetest

EN1021-I/2

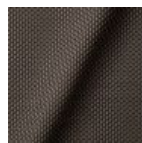
US. Cal. Bull. 117-2013

BS5852 part I

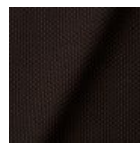
DIN 4102-B2



Trickle  
**Flour**



Trickle  
**Twig**



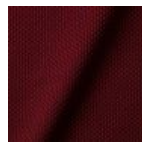
Trickle  
**Peat**



Trickle  
**Dust**



**Trickle**  
Slate



Trickle  
**Chili**



Trickle  
**Lavender**



Trickle  
**Lagoon**

---

## Twill

# m o o o i<sup>®</sup>

## composition

72% wo, 8% pa, 20% pl

## abrasion

75.000 martindale

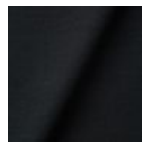
## lightfastness 5

## firetest

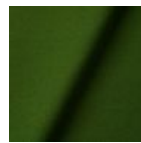
EN1021 I&2



Twill  
**Caviar**



Twill  
**Graphite**



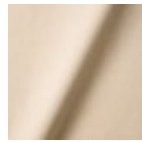
Twill  
**Grass**



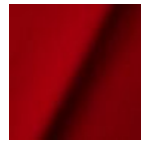
Twill  
**Grey**



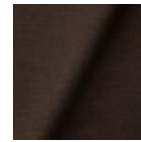
Twill  
**Linen**



Twill  
**Natural**



Twill  
**Passion**



Twill  
**Walnut**

---

## Twill Melange

## composition

60% WO / 20% PES / 20% PA

## abrasion

80.000 martindale

## lightfastness 6-7

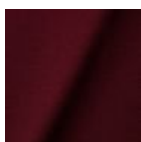
## firetest

EN1021-1/2

US. Cal. Bull. 117-2013

BS5852 part1

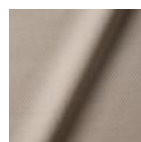
DIN 4102-B2



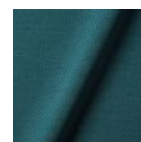
Twill Melange  
**Chili**



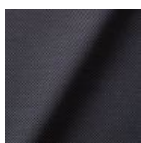
Twill Melange  
**Dust**



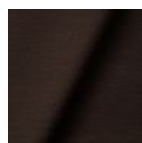
Twill Melange  
**Flour**



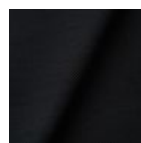
Twill Melange  
**Lagoon**



Twill Melange  
**Lavender**



Twill Melange  
**Peat**



Twill Melange  
**Slate**



Twill Melange  
**Twig**

---

## Twill Summit Uni Composition

# m o o o i<sup>®</sup>

## composition

Twil: 72% wo, 8% pa, 20% pl

Summit UNI: 22% wo, 2% pa, 14% pl, 62% pl filling

## abrasion

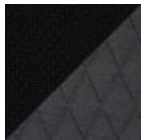
Twil: 75.000 martindale

Summit Uni: 50.000 martindale

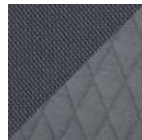
## lightfastness 5

## firetest

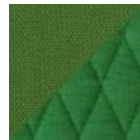
EN1021 I&2



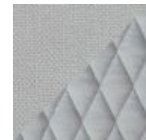
Caviar



Graphite



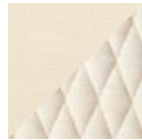
Grass



Grey



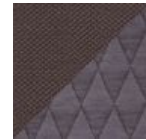
Linen



Natural



Passion



Walnut

---

## Velour

## composition

77% wo, 8% pa, 15% pl

## abrasion

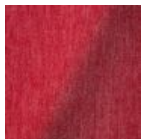
100.000 martindale

## lightfastness 7

## firetest

FR BS5852 0/1

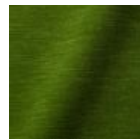
EN1021 I&2



Velour  
**Coral**



Velour  
**Stone**



Velour  
**Moss**

---

## Vesper





**composition**

10% CO, 40% L, 10% PA, 10% PL, 30% VI

**abrasion**

40.000 Martindale rubs, EN ISO 12947

**lightfastness**

Note 5, EN ISO 105-B02

**firetest**

EN 1021-1/2

US. Cal. Bull. 117-2013

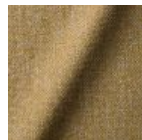
Upon request, with treatment:

BS5852 part I

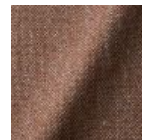
BS5852 crib5



Vesper  
**Aluminium**



Vesper  
**Brass**



Vesper  
**Bronze**



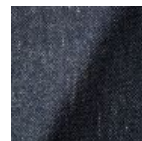
Vesper  
**Carbon**



Vesper  
**Nickel**



Vesper  
**Silver**



Vesper  
**Steel**



Vesper  
**Titan**

---

## Extinct Animal Collection - Dodo Pavone

**composition**

12% CO 88% PL

**abrasion**

40.000 Martindale rubs, EN ISO 12947

**lightfastness**

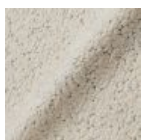
Note 5, EN ISO 105-B02

**firetest**

US. Cal. Bull. 117-2013

Upon request, with treatment:

BS5852 part I



---

## Arredo Leather



### composition

100% semi aniline leather

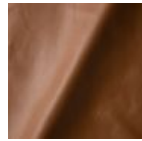
Leather is a natural product, colours may vary from hide to hide.

### firetest

EN1021 I&2



Arredo Leather  
**Black**



Arredo Leather  
**Brown**



Arredo Leather  
**White**

---

## Cervino Leather

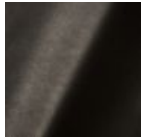
### composition

100% aniline leather

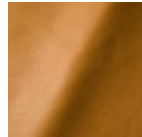
Leather is a natural product, colours may vary from hide to hide.

### firetest

EN1021 I&2



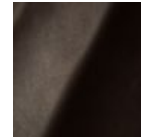
Cervino Leather  
**Anthracite**



Cervino Leather  
**Cognac**



Cervino Leather  
**Mud**



Cervino Leather  
**Pure**

---

## Kvadrat Fabrics

### Kvadrat Fabrics

Selected Moooi products can be upholstered with a collection of Kvadrat fabrics. Kvadrat designs high-quality upholstery, in an extensive range of colours and textures.

Go to our Kvadrat fabrics page for a full overview of all fabric families you can choose from.

